

# WFD50

5,000 Lb.

Diesel

Pneumatic Tire

*Specifications & Features*



WFD50

Authorized Dealer



General	1	Model			<b>WFD50 EPA</b>	
	2	Power Type			65Hp Diesel	
	3	Rated Capacity		Lbs	5000	
	4	Load Centre		Inch	24	
Characteristic&Dimension	5	* Lift Height		Inch	118	
	6	* Fork Size	L×W×T	Inch	42x4.72x1.57	
	7	Mast Tilt Angle	F/R	Deg	6°/12°	
	8	Front Overhang (Wheel center to fork face)		Inch	18.5	
	9	Ground Clearance (Bottom of mast)		Inch	4.72	
	10	Overall Dimension	Length to face of fork(Without fork)		Inch	102.4
	11		Overall Width		Inch	80.91
	12		Mast Lowered Height		Inch	80.91
	13		Mast Extended Height (with backrest)		Inch	159
	14		Overhead Guard Height		Inch	81.5
	15	Turning Radius (outside)		Inch	91	
	16	Min. intersecting aisle		Inch	93.7	
Performance	17	Speed	Travel (Empty load)		Mph	12
	18		Lifting(Full load)		In/s	20.9
	19	Max.Gradeability		%	20	
Chassis	20	* Tire	Front			7.00-12-12 PR
	21		Rear			6.00-9-10 PR
	22	Wheelbase		In	63	
	23	Service weight		Lbs	8157	
Power&Transmission	24	Battery	Voltage/Capacity		V/Ah	12/80
	25	* Engine	Model			<b>B3.3-C65</b>
	26		Manufacture			<b>CUMMINS</b>
	27		Rated output/r.p.m.		kw	48 / 2600
	28		Rated torque/r.p.m.		N·m	214 / 1600
	29		No.of Cylinder			4
	30		Bore×Stroke		mm	95 x 115
	31		Displacement		cc	3300
	32		Fuel Tank Capacity		G	15.85
	33	* Transmission	Type			Hydraulic
	34		Stage	FWD/RVS		
35	Operating Pressure for attachment		PSI	2538		

## Features & Benefits

Cummins B3.3 C65 4 Cylinder  
65 Hp , Tier IV Interim  
Emissions below 75Hp.  
Naturally aspirated for off road  
work environment. With a cast-  
iron parent bore block designed  
for durability and reliability.  
Direct injection for increased  
fuel efficiency, low heat rejection  
and quicker starts. An isolated  
valve cover for reduced noise

- Power shift (Automatic)  
transmission with separate  
inching and brake pedals, offers  
positive operation in tight  
working areas, especially  
beneficial working on ramps and  
inclines.

- High visibility design mast with  
side thrust rollers in the  
carriage for smoother operation  
and longer life of the mast  
components.

- Fully Hydrostatic Power  
Steering for smoother operation  
and many fewer parts for lower  
maintenance costs. This utilizes  
the largest cylinder and thickest  
steel for protection of any forklift  
in its class!

- Large hydraulically actuated  
Drum & Shoe type brakes for  
positive braking  
performance and ease of  
maintenance. Mechanical  
lever type parking brake for  
reliability.

- Control Handles are mounted  
on the dash for operator  
convenience and also allows the  
operator to enter/exit the  
operator compartment from  
either side of the machine  
comfortably.

- Tilt Steering Wheel
- Adjustable Seat
- Seat Belt
- Dual Head Lights
- Front Turn Signals
- Rear Turn Signals
- Brake Lights
- Back-up Lights
- Back-up Alarm
- Neutral Safety Switch
- Welded Overhead Guard
- Integral Fuel Tank
- Integral Hydraulic Tank
- High air intake
- Cyclone air cleaner
- Insulated engine cover
- Hand hold for entry
- Radiator overflow bottle
- Third valve & lever
- Horn
- Hour Meter
- Charge warning light
- Temperature warning light
- Oil pressure gauge
- Key switch
- Safety load backrest
- Swing-down LPG tank bracket
- ITA Class II forks & carriage
- Easy access floor boards
- Rubber safety mat
- Meets or exceeds all ANSI B56.1  
safety standards for powered  
industrial trucks
- CE Rated
- EPA Compliant



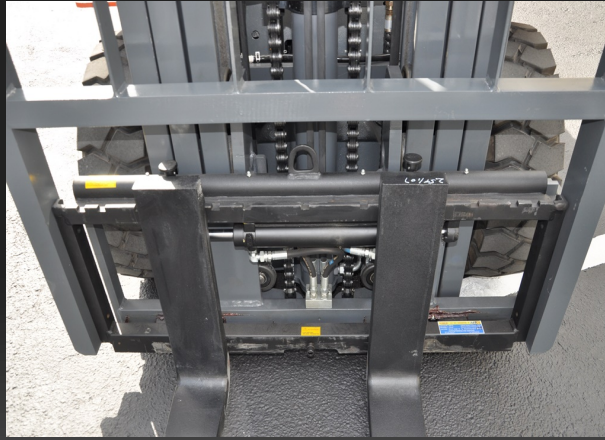
**WFD50**

## Standard Equipment



## Optional Equipment

Two Stage Mast  
Pneumatic Tires  
Cummins Engine  
Auto Transmission  
Headlights  
Back Up Lights Turn  
Signals  
Hydro Steer Axle  
Mirrors  
Load Backrest  
Seat Belt  
Tilt Steer Wheel  
3<sup>rd</sup> Valve  
Operator Manual  
Standard Forks



Various Masts  
Standard mast  
Full Free Lift  
Triplex mast  
Various Tires  
CUSHION tires  
DUAL drive tires  
Solid pneumatic  
Foam Filled  
Side Shifters  
4 Way Hydraulics  
Fork Positioner  
All Weather CAB  
Attachments  
Much More!

All photos may include optional equipment



Specifications are subject to change. Worldlift reserves the right to make improvements and changes to their equipment at any time without prior notice.



**WFD50**  
5000lb Diesel  
Pneumatic